

MOVEMENT BEAD FOR GYPSUM BOARDS



Technical informations :

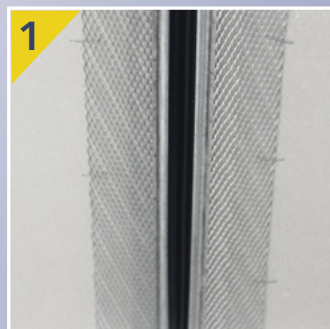
DILATMESH 2191				
Ref.	Stock	Dim.*	Pces/ Pack	Packs/ Pal.
DILATMESH 2191	-	3,00 m	10	60

* other dimensions on request for minimum quantities.

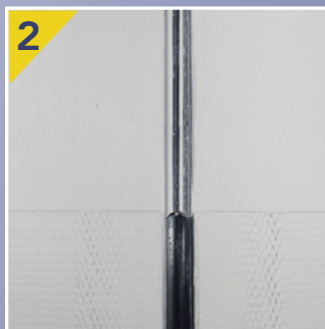
Advantages :

1. Avoid crackings between two building components or on big surfaces of gypsum boards.
2. Suitable for any gypsum board thickness.

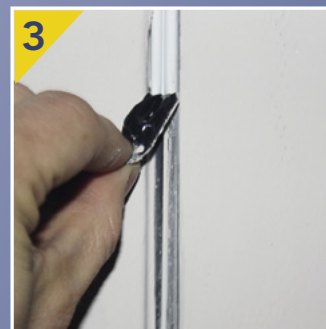
QUICK FIXING AND EASY PLASTERING



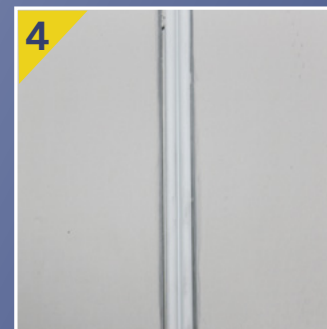
1
Dry fixing of the profile every 50 cm (with galvanised staples, on both sides of the profile).



2
1st coat with a joint filler.



3
After a first drying period, remove the protective film from the joint.

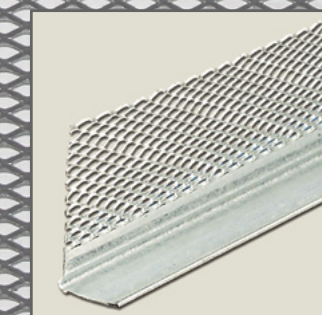
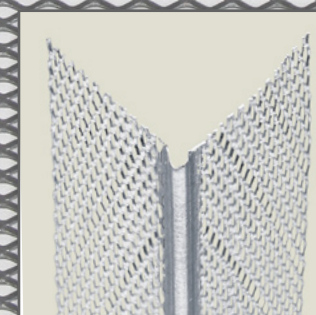


4
2nd coat with a joint finisher.

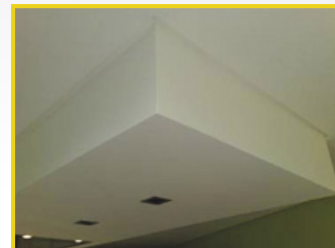
Dealer :



MICRO-MESHES BEADS

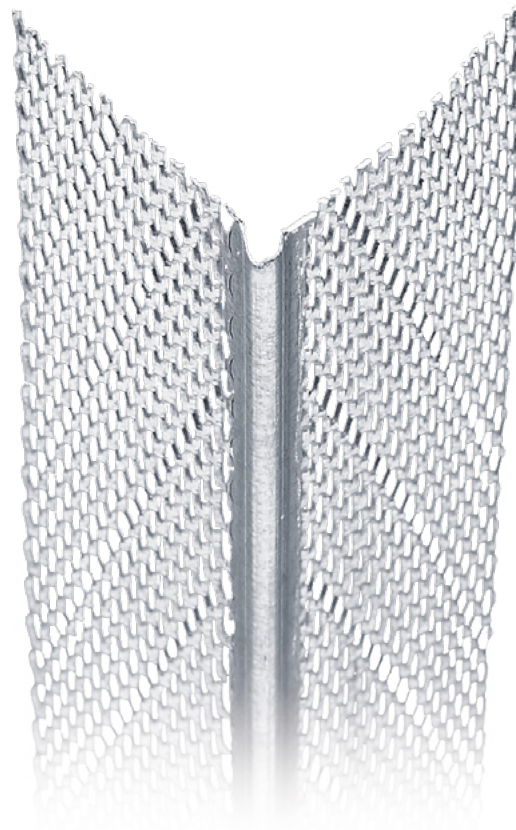


CORNER BEAD FOR GYPSUM BOARDS



Advantages :

1. Dry fixing, quick and easy !
2. Time saving : only 2 finishing coats.
3. High-class finishing quality !
4. Shock resistance (CSTB technical advice).
5. Corrosion resistance thanks to the AZ (Aluzinc) coating !
6. Suitable for any gypsum board thickness.



Technical informations :

MICROMESH 0113			
Dim.*	Stock	Pces/ Pack	Packs/ Pal.
2,45 m (8')	S	60	48
2,75 m (9')	S	60	48
3,05 m (10')	S	60	48

* other dimensions (or packaging) on request for minimum quantities.

EDGE BEADS FOR GYPSUM BOARDS



For perfect straight finishing lines !

Technical informations :



Advantage :

Straight and perfect finishing of the gypsum board edges on walls or ceilings.

PLASTO MICRO					
Ref.	Stock	Gypsum boards	Dim.*	Pces/ Pack	Packs/ Pal.
PLASTO MICRO 0191	S	9,5 mm	3,05 m (10')	50	66
PLASTO MICRO 0128	S	12,5 mm	3,05 m (10')	50	66
PLASTO MICRO 0192	S	15 mm	3,05 m (10')	45	66
PLASTO MICRO 0193	S	18 mm	3,05 m (10')	45	66
PLASTO MICRO 0194	S	25 mm	3,05 m (10')	40	66

* other dimensions on request for minimum quantities.

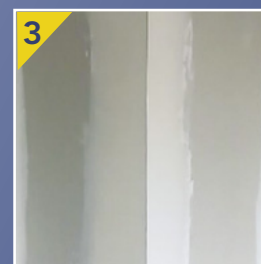
QUICK FIXING AND EASY PLASTERING



Dry fixing of the profile with the "Clinch On" every 50 cm.



1st coat with a joint filler.



2nd coat with a joint finisher.

Good idea:



Dry fixing, thanks to the "Microfix" tool ! (no nails, screws, staples or even plaster)



QUICK FIXING AND EASY PLASTERING



Dry fixing of the profile every 50 cm (with galvanised staples).



1st coat with a joint filler.



2nd coat with a joint finisher.